

1. Explain with your own words what is a musical phrase.

2. What is the difference between an open phrase and a closed one?

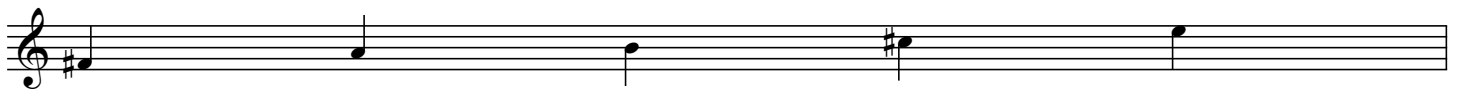
3. Given the following intervals, write below the staff if they are a Step, a Skip or a Leap.



4. Write the Symmetric Diminished scale (half-whole), starting on the following notes.



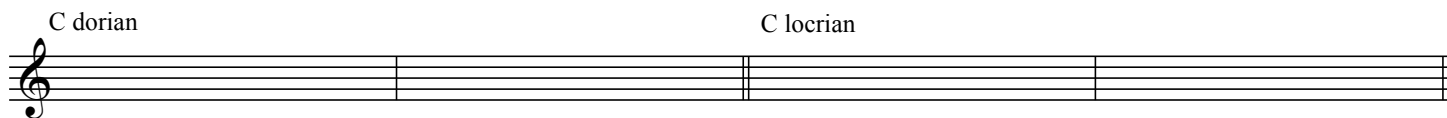
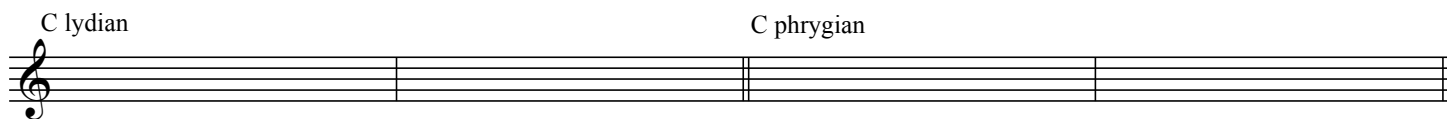
5. Is the following Pentatonic scale Mayor or Minor?



6. Add the necessary steps or notes to the following scales to make them a "blues scale"



7. Convert the given melody as indicated



10. Below is a melody using G Mixolydian mode, but there is a note that does not correspond. Find it and correct it.

